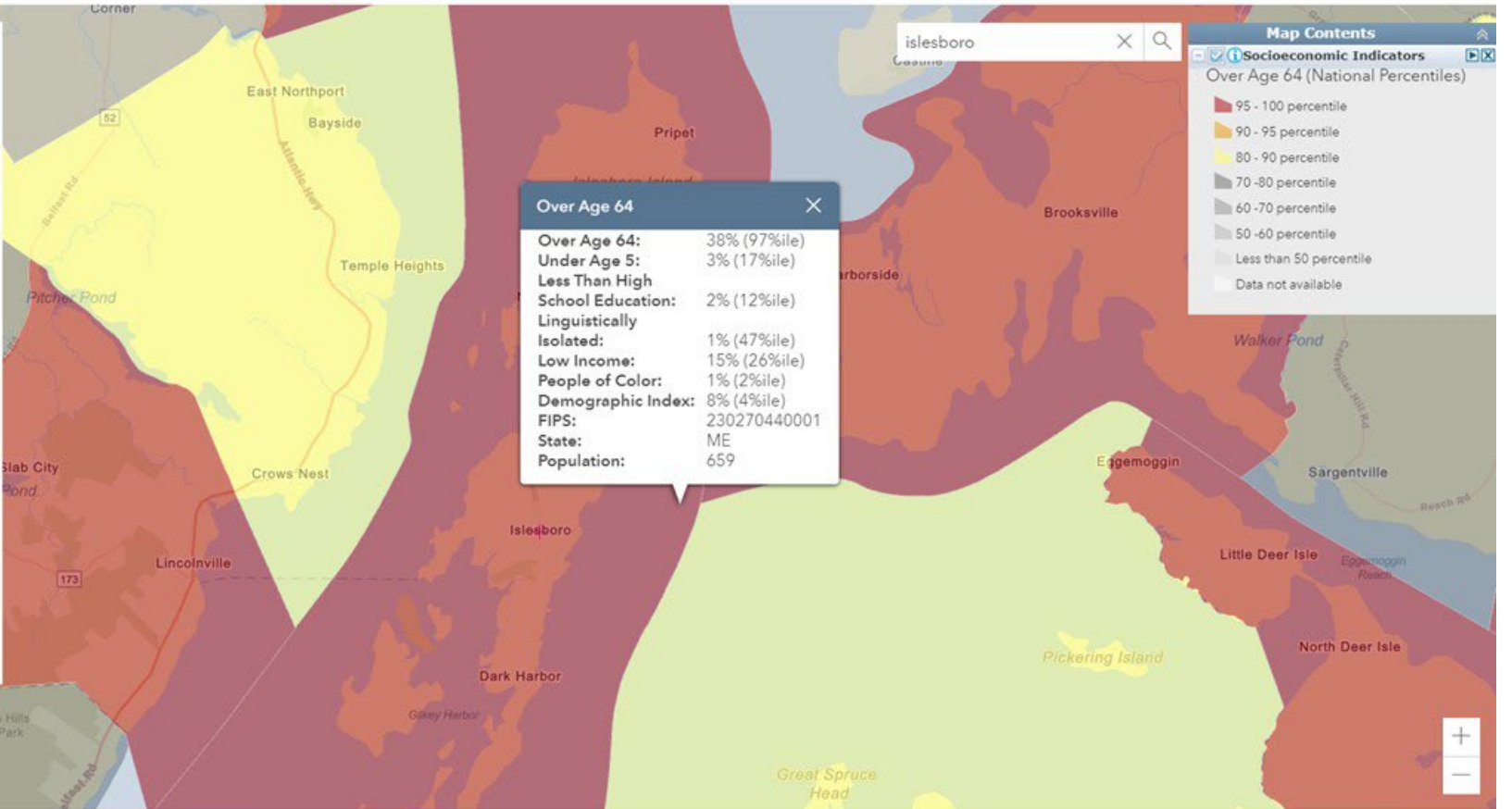
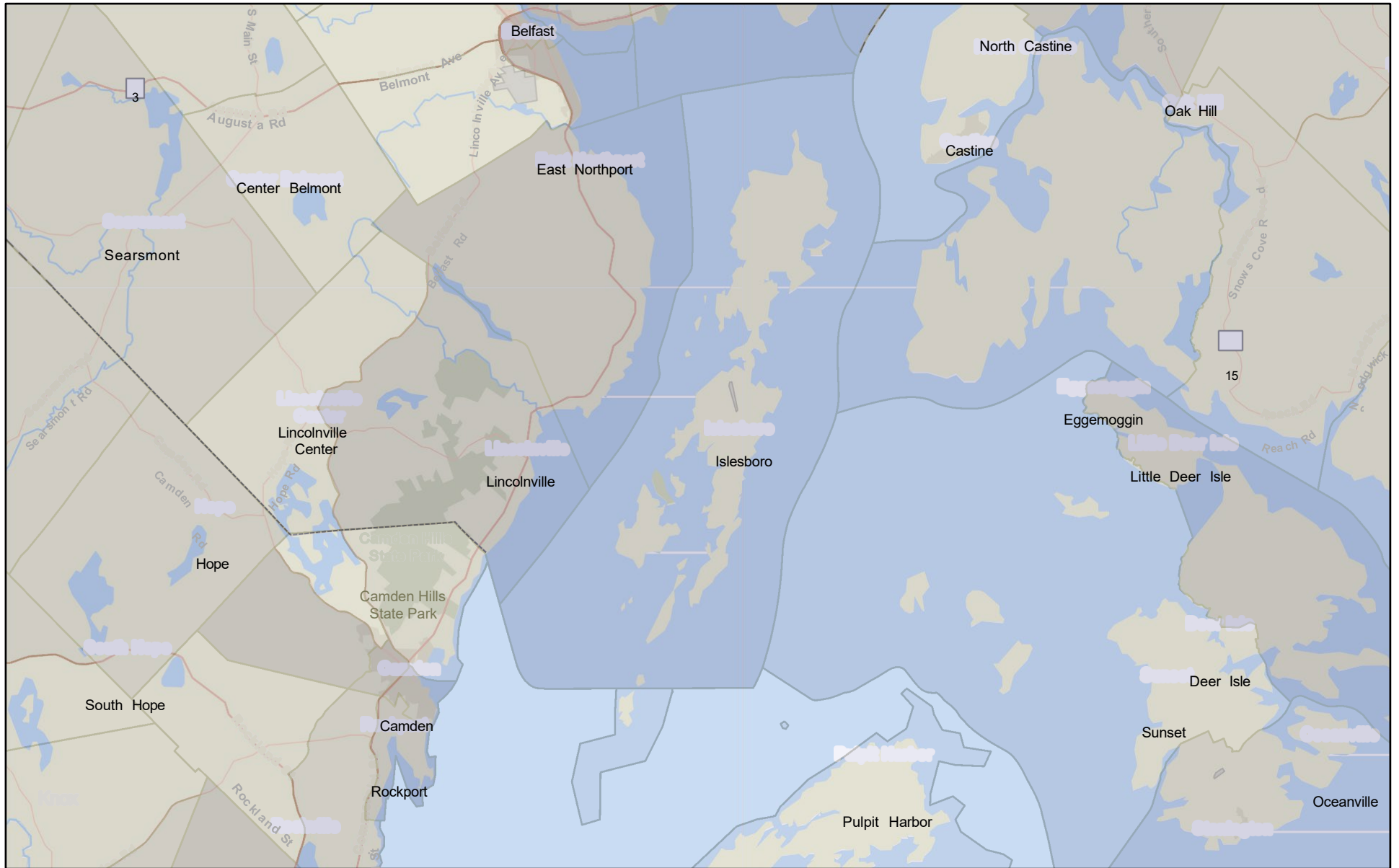


Compare to US  Compare to State  
**Environmental Justice Indexes**  
**Pollution and Sources**  
**Socioeconomic Indicators**  
 Demographic Index  
 People of Color  
 Low Income  
 Unemployment Rate  
 Linguistically Isolated  
 Less Than High School Education  
 Under Age 5  
**Over Age 64**  
 Health Disparities  
 Climate Change Data  
 Critical Service Gaps  
 More Demographics



# Islesboro Population over 65, 2015-2019 ACS



Knox

Rockville

Stonington

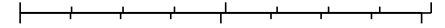
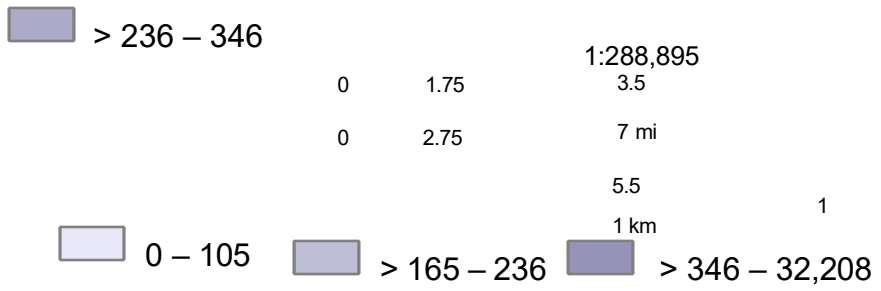
8/23/2022

by Block Group

> 105  
 - 165

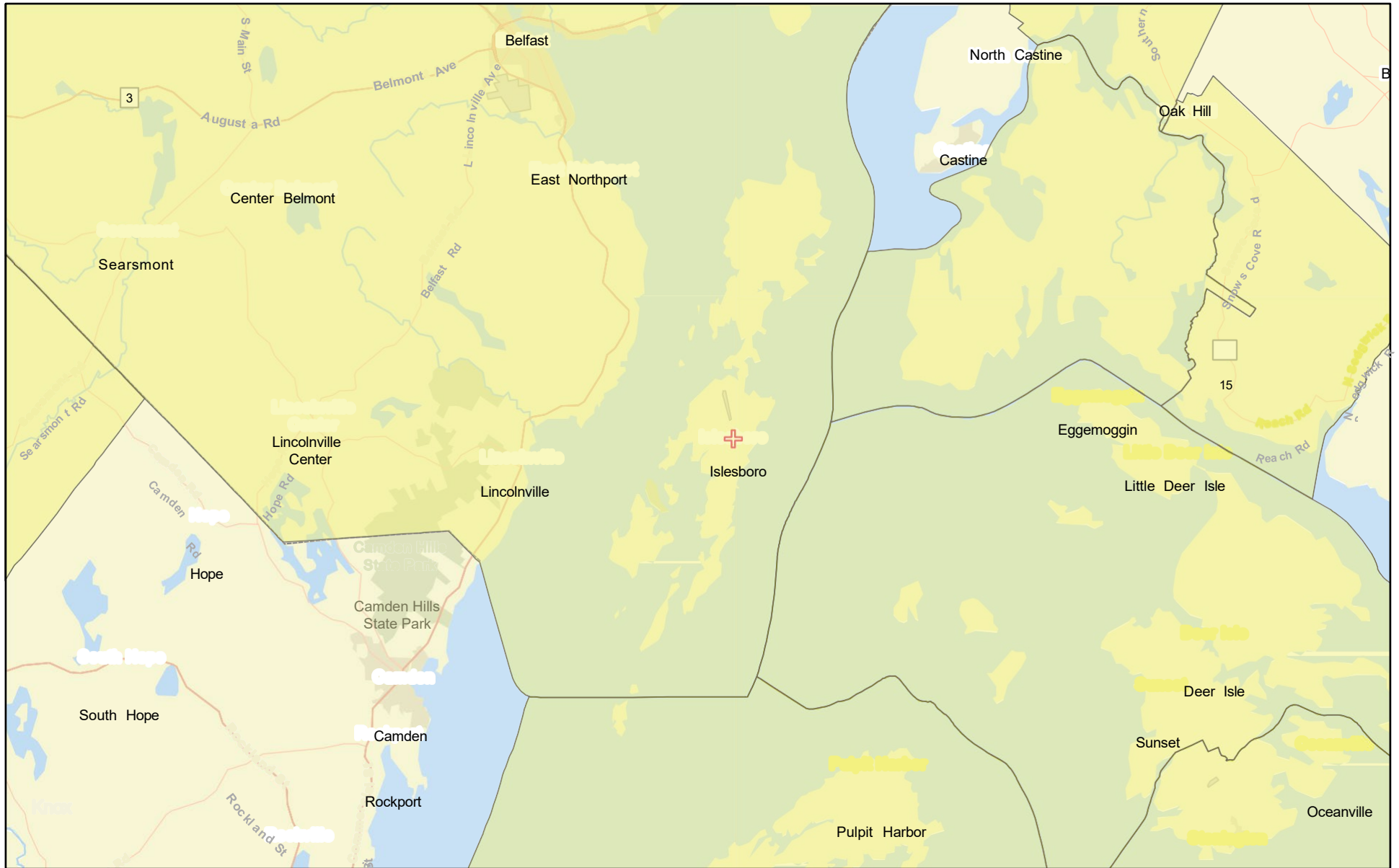
# Population over 64, 2015 - 2019 ACS

EPA EJ Screen



EPA, Esri, HERE, Garmin, SafeGraph, METI/NASA, USGS, EPA, NPS, USDA

# Medically Underserved, Islesboro



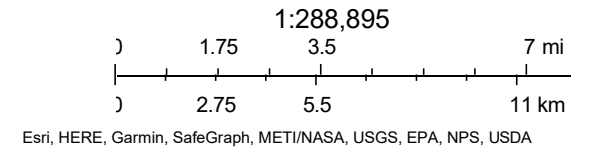
Knox  
Rockville  
Stonington

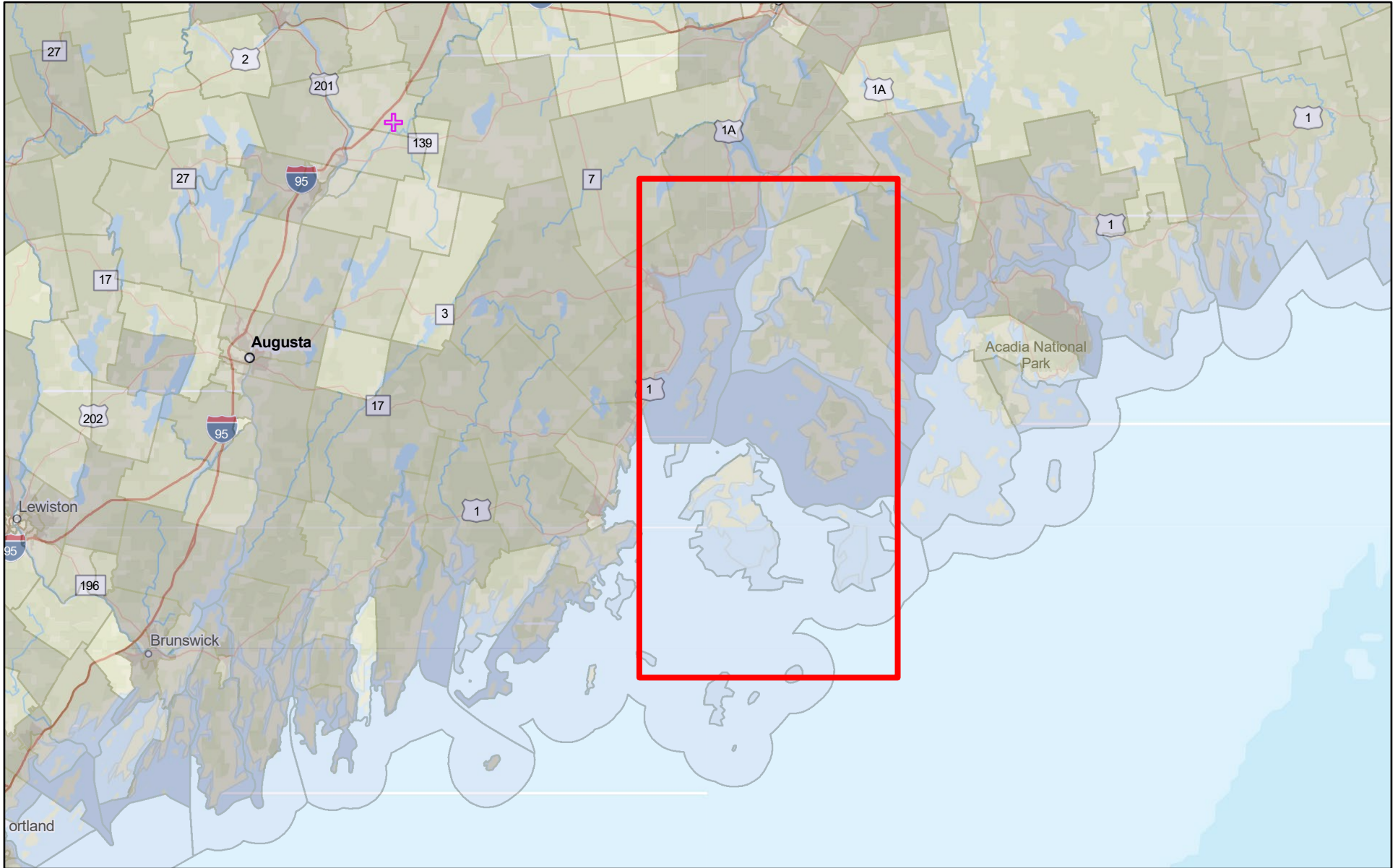
8/23/2022

✚ Islesboro

Medically Underserved Search

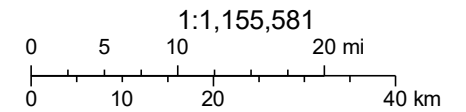
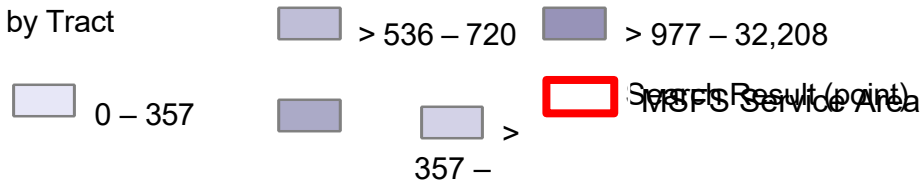
Result (point)





8/23/2022

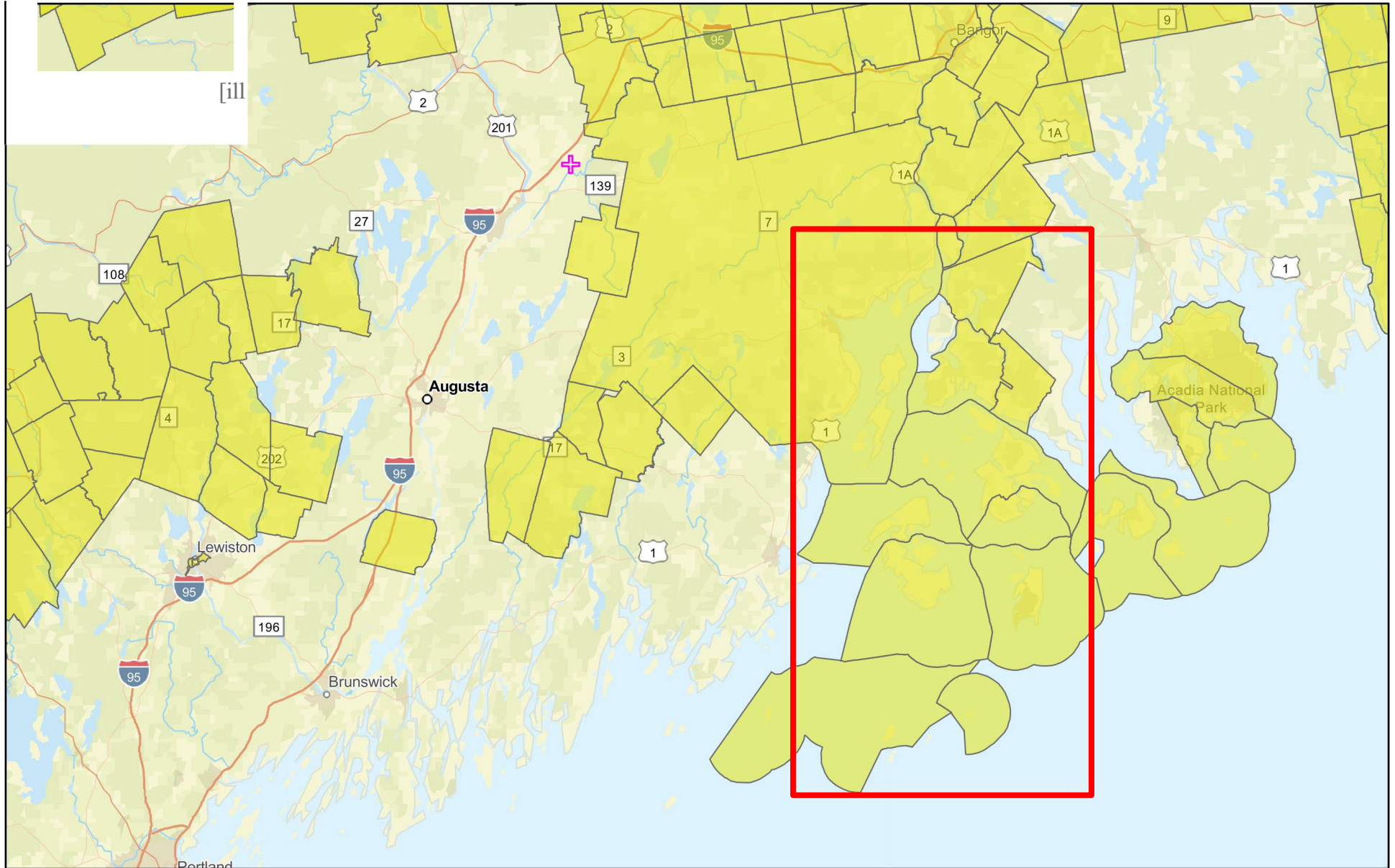
by Tract



> 720 – 977

EPA, Esri,  
HERE, Garmin,  
SafeGraph,  
FAO,  
METI/NASA,  
USGS, EPA,  
NPS

# Medically Underserved, Maine



8/23/2022

**CLL:** Search Results (Area)

**D** Medically Underserved

